

**barclay
sales ltd.**

EFFECTIVE MAY 15, 2009

PLUMB RITE®

GRAB BARS

2009



Effective May 15, 2009 – Rev 9

1441 Kebet Way, Port Coquitlam, B.C. V3C 6L3 Ph: (604) 945-1010
Fax: (604) 945-3030 Toll Free Fax: 1-800-665-6050

PLUMB RITE®

Chrome and Chrome Knurled Grab Bars

Chrome Smooth 1" Diameter *with adjustable oblong flanges*



Part#	1020	1030	1040	1050	1060	1070	1080
UPC#	00028-6	00029-3	00030-9	00031-6	00032-3	00033-0	00035-4
Length	12"	16"	18"	24"	32"	36"	48"
List Price	38.30	39.60	40.95	45.30	51.30	54.25	63.15

Chrome Smooth 1 1/4" Diameter *with exposed flanges (3 Hole)*



Part#	1520	1530	1540	1550	1560	1570	1580
UPC#	00044-6	00045-3	00046-0	00047-7	00048-4	00049-1	00050-7
Length	12"	16"	18"	24"	32"	36"	48"
List Price	48.15	51.70	53.30	58.70	66.70	73.70	77.00

Chrome Knurled 1" Diameter *with adjustable oblong flanges*



Part#	1020K	1030K	1040K	1050K	1060K	1070K	1080K
UPC#	00088-0	00092-7	00097-2	00100-9	00104-7	00107-8	00110-8
Length	12"	16"	18"	24"	32"	36"	48"
List Price	33.30	35.35	37.12	41.25	47.65	50.40	59.75

Chrome Knurled 1 1/4" Diameter *with exposed flanges*



Part#	1520K	1530K	1540K	1550K	1560K	1570K	1580K
UPC#	00151-1	00158-0	00164-1	00169-6	00174-0	00179-5	00185-6
Length	12"	16"	18"	24"	32"	36"	48"
List Price	51.50	52.50	56.00	58.00	73.00	81.00	88.00

PLUMB RITE®

Effective May 15, 2009 – Rev 9

1441 Kebet Way, Port Coquitlam, B.C. V3C 6L3 Ph: (604) 945-1010 Fax:(604) 945-3030 Toll Free Fax: 1-800-665-6050

White, Bone and Stainless Steel Grab Bars

White Smooth 1" Diameter with adjustable oblong flanges



Part#	1020W	1030W	1040W	1050W	1060W	1070W	1080W
UPC#	00089-7	00093-4	00098-9	00101-6	00105-4	00108-5	00111-5
Length	12"	16"	18"	24"	32"	36"	48"
List Price	33.30	35.35	37.15	38.00	41.00	43.00	45.00

Bone Smooth 1" Diameter with round exposed flanges



Part#	1020B	1030B	1040B	1050B	1060B	1070B	1080B
UPC#	00091-0	00091-0	00096-5	00099-6	00103-0	00106-1	00429-1
Length	12"	16"	18"	24"	32"	36"	48"
List Price	45.80	49.85	51.70	58.00	67.00	74.50	84.00

Stainless Steel Smooth 1 1/4" Diameter with exposed flanges



Part#	1520SS	1530SS	1540SS	1550SS	1560SS	1570SS	1580SS
UPC#	00155-9	00162-7	00167-2	00172-6	00177-1	00182-5	00188-7
Length	12"	16"	18"	24"	32"	36"	48"
List Price	46.00	51.25	53.00	59.00	67.00	71.00	84.00

Stainless Steel Smooth 1 1/4" Diameter with Twist Lock Concealed Flanges



Part#	1520SSC	1530SSC	1540SSC	1550SSC	1560SSC	1570SSC	1580SSC
UPC#	00156-6	00163-4	00168-9	00173-3	00178-8	00183-2	00552-6
Length	12"	16"	18"	24"	32"	36"	48"
List Price	46.00	52.50	54.50	60.00	69.00	73.00	85.00

PLUMB RITE®

Effective May 15, 2009 – Rev 9

1441 Kebet Way, Port Coquitlam, B.C. V3C 6L3 Ph: (604) 945-1010 Fax:(604) 945-3030 Toll Free Fax: 1-800-665-6050

Shur-grip tubing's textured surface offers a positive grip and is resistant to scratching. It has a "closed" surface as compared to peened or knurled tubing making it less prone to pitting corrosion and much easier to clean and disinfect. The result is reduced fear of bacterial growth and a safer environment.

Shur-Grip Stainless Steel 1 1/4" Diameter
with exposed flange



Part#	1520SG	1530SG	1540SG	1550SG	1560SG	1570SG	1580SG
UPC#	00152-8	00160-3	00165-8	00170-2	00175-7	00180-1	00186-3
Length	12"	16"	18"	24"	32"	36"	48"
List Price	64.50	74.00	73.75	85.00	102.00	108.00	133.00

Shur-Grip Stainless Steel 1 1/4" Diameter
with Twist Lock concealed flanges



Part#	1520SGC	1530SGC	1540SGC	1550SGC	1560SGC	1570SGC	1580SGC
UPC#	00153-5	00161-0	00166-5	00171-9	00176-4	00181-8	00187-0
Length	12"	16"	18"	24"	32"	36"	48"
List Price	65.50	75.00	74.60	86.00	104.00	110.00	135.00

Floor to Ceiling Poles

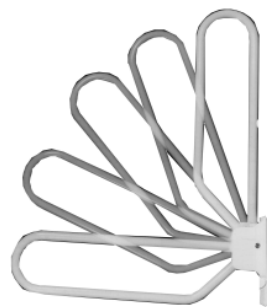
with one fixed end and one loose flange. Can be cut to size by installer.



Description	Stainless Steel	Shur-Grip
Part#	1510SS	1510SGC
UPC#		00150-4
Size	1-1/4" x 8 Feet	1-1/4" x 8 Feet
List Price	158.00	267.00

Flip-Up Bars

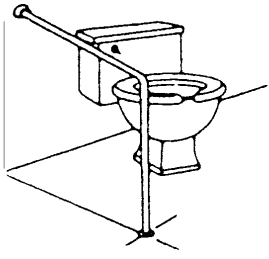
Mounting hardware is not included



Description	White	Shur-Grip	Stainless Steel	Paper Holder removable	Paper Holder FIXED
Part#	2600LU	2600SSLU	2600SS	2600TP	Add "TF" to Bar number
UPC#	00217-4	00218-1	00549-6	00550-2	
Size	1-1/4" x 30"	1-1/4" x 30"	1-1/4" x 30"	1-1/4" x 30"	
List Price	250.00	327.50	280.00	37.50	20.00

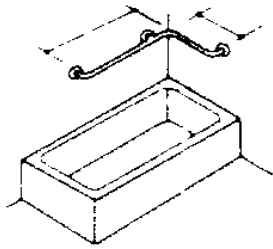
Wall to Floor, Tub Rails & 120 Degree Bars

Wall to Floor Bars



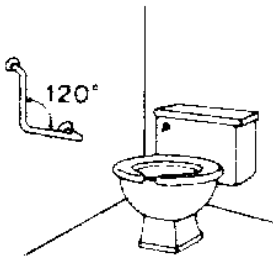
Description	Chrome Knurled	Stainless Steel
Part#	1660K	1660SS
UPC#	00192-4	
Size	33" x 30"	33" x 30"
List Price	111.00	88.50

Corner Tub Rails



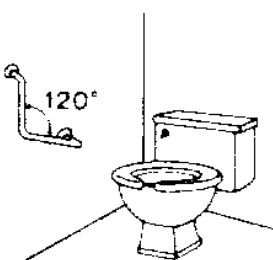
Description	Chrome Smooth	Chrome Knurled	Stainless Concealed	Stainless Concealed	Stainless Concealed Peened
Part#	1230	1230K	1230SSC	3036SSC	3036SSCP
UPC#	00040-8	00132-0			
Size	34" x 18"	34" x 18"	34" x 18"	30 x 36	30 x 36
List Price	96.50	99.00	135.00	204.00	

Chrome & Chrome Knurled 120 Degree Angle Bars



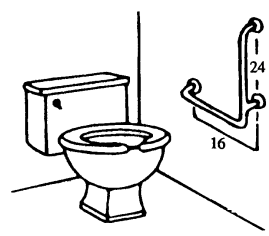
Description	Chrome Smooth 1"	Chrome Knurled 1"	Chrome Smooth 1-1/4"	Chrome Knurled 1-1/4"	Chrome Smooth 1-1/4"	Chrome Smooth 1-1/4"	Chrome Knurled 1-1/4"
Part#	1430	1430K	1930	1930K	M1500-16	M1500-24	M1500-24K
UPC#	00042-2	00145-0	00059-0		00471-0	00472-7	00473-4
Size	12" x 12"	12" x 12"	12" x 12"	12" x 12"	16" x 16"	24" x 24"	24" x 24"
List Price	46.70	52.50	62.50	66.00	79.00	107.00	108.00

Stainless Steel & Shur-Grip 120 Degree Angle Bars



Description	Stainless Steel 1-1/4"	Stainless Steel Shur-Grip 1-1/4"	Stainless Steel Concealed Flanges 1-1/4"	Stainless Steel Concealed Flanges Peened 1-1/4"
Part#	M4500-24	M4500-24SG	M4500-24C	M4500-24CP
UPC#	00475-8	00477-2	00476-5	
Size	24" x 24"	24" x 24"	24" x 24"	24" x 24"
List Price	117.00	170.00	119.00	130.00

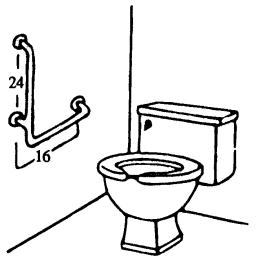
1" Diameter 16" x 24" With exposed flanges



Left Hand Shown

Description	Chrome Smooth	Chrome Knurled	White Smooth	Bone Smooth
Part#-Left Hand	1110	1110K	1110W	1110B
UPC#	00036-1	00116-0	00119-1	00115-3
Part#-Right Hand	1120	1120K	1120W	1120B
UPC#	00037-8	00121-4	00122-1	00120-7
List Price	87.50	74.80	90.00	113.00

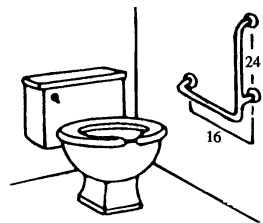
1" Diameter 16" x 32" With exposed flanges



Right Hand Shown

Description	Chrome Smooth	Chrome Knurled	White Smooth	Bone Smooth
Part#-Left Hand	1170	1170K	1170W	1170B
UPC#	00038-5	00125-2	00126-9	00124-5
Part#-Right Hand	1180	1180K	1180W	1180B
UPC#	00039-2	00129-0	00130-6	00128-3
List Price	93.75	100.29	95.00	118.00

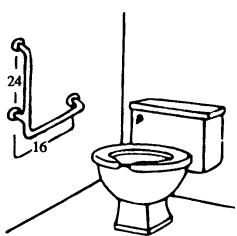
1-1/4" Diameter 16" x 24" With exposed flanges



Left Hand Shown

Description	Chrome Smooth	Chrome Knurled
Part#-Left Hand	1610	1610K
UPC#	00051-4	00190-0
Part#-Right Hand	1620	1620K
UPC#	00052-1	00191-7
List Price	106.00	116.00

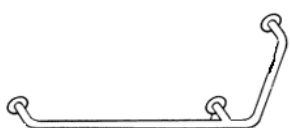
1-1/4" Diameter 16" x 32" With exposed flanges



Right Hand Shown

Description	Chrome Smooth	Chrome Knurled
Part#-Left Hand	1670	1670K
UPC#	00055-2	00193-1
Part#-Right Hand	1680	1680K
UPC#	00056-9	00194-8
List Price	113.00	125.00

1-1/4" Diameter 24 x 36 Tub Bar



Left Hand Shown

Description	Stainless Concealed Flanges	Stainless Concealed Flanges Peened
Part#-Left Hand	1810SSC	1810SSCP
UPC#		
Part#-Right Hand	1820SSC	1820SSCP
UPC#		
List Price	180.00	195.00

Shower Seats, Bathtub Grips & Access A-Lift

Padded Fold Down Shower Seats



PSS16

PA2821 or
PA3221
(Left Hand
Shown)



Part#	PSS16	PA2821L	PA2821R	PA3221L	PA3221R
Size	14.5" x 16"	28" x 21"	28" x 21"	32" x 21"	32" x 21"
Color	White	White	White	White	White
Cutout	N/A	Left	Right	Left	Right
List Price	410.00	625.00	625.00	650.00	650.00

Phenolic Slat Fold Down Shower Seats

PHSS16



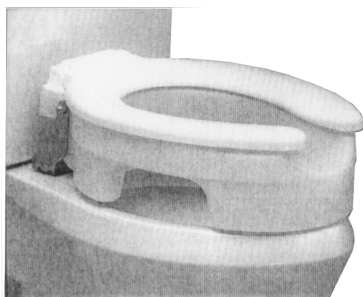
PH2821 or
PH3221

(Left Hand
Shown)



Part#	PHSS16	PH2821LWH	PH2821RWH	PH3221LWH	PH3221RWH
Size	14.5" x 16"	28" x 21"	28" x 21"	32" x 21"	32" x 21"
Color	White	White	White	White	White
Cutout		Left	Right	Left	Right
List Price	410.00	625.00	625.00	650.00	650.00

Access-A-Lift Molded Seats



Description	Elongated Bowls	Regular Bowls
Part#	ACC100	ACC105
UPC#	00396-6	13105-8
Size	4" High	4" High
List Price	129.00	129.00

Bathtub Grips



2520

Item#	2520
UPC#	00062-0
Size	17" W x 15"H
List Price	25.00**

** While Quantities Last

